



MADE TO MEASURE / MÅLING AV KROPP / Måttsydda beställningar

Thank you for ordering made to measure product from Sharkspeed. For a custom-made order, it is very important that you check your measurements very carefully and follow our recommendations and step by step help with measuring. The return policy does not apply for made to measure orders. In case of fitting problems the measures you sent will be compared to the finish manufactured item. Note that the factory adds 3-10 cm in dimensions depending on the location for optimum mobility of the product.

After receiving your order, your size is checked. Note that this product's price is for body size up to 3XL. For larger body sizes, there is an additional cost of approx. EUR 10 / textile per increased size, EUR 15 / leather per increased size. The additional cost is calculated by a Sharkspeed handler after receiving your body measurements. The delivery time is between 12 - 30 working days depending on the seasonal load.

All extra fees are charged in advance and before production begins.

ORDERNUMBER:

NAME:

ADRESS:

POSTCODE:

CITY:

COUNTRY:

PHONE.NO:

EMAIL:

**BE SURE TO TAKE EXACT MEASUREMENTS AND NOT TO ADD EXTRA CM TO THE MEASUREMENT.
IN THE MANUFACTURE PROCESS WE WILL ADD 5-15 CM DEPENDING ON LAYERS OF FABRIC TO BE USED**

MEASUREMENT FORM



NECK / NACKE
Around neck

 CM

SHOULDER LENGTH
Axelvidd

 CM

CHEST/BUST/
BRÖST
Around chest

 CM

ARMPIT
ARMHÅLA
Around armpit

 CM

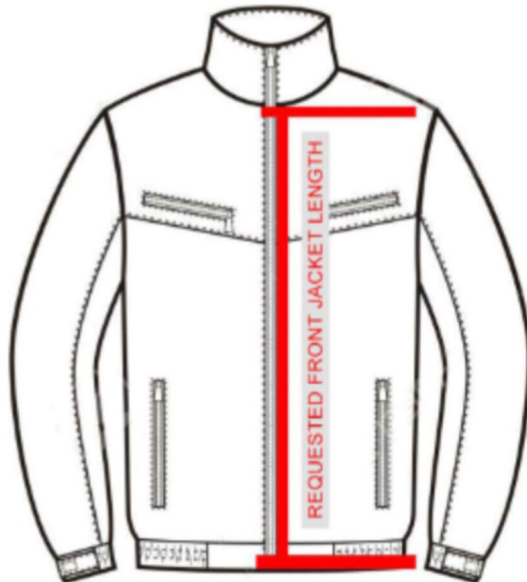
STOMACH
MAGEN
Around stomach

 CM

NECK TO WAIST
Nacke till bakre midjepunkt

 CM

ATTENTION! THESE MEASURES WILL ONLY BE USED IF POSSIBLE AND WILL BE DONE ACCORDING TO THE MEASURES GIVEN ABOVE.



MEASURES YOU GIVE HERE WILL BE APPLIED IF POSSIBLE AND WILL BE ADJUSTED ACCORDING TO YOUR OTHER BODY MEASUREMENTS.

REQUESTED FRONT LENGTH OF JACKET (CM)

ÖNSKAD FRONT LÄNGD AV JACKAN (CM)

REQUESTED BACK LENGTH OF JACKET (CM)

ÖNSKAD BAK LÄNGD AV JACKAN (CM)



Please note that the text will be written in similar font shown on image. Please write the text clearly so no error occurs.

Text 1:

Text 4:

Text 7:

Text 2:

Text 5:

Text 3:

Text 6:

CLUB LOGO: Please email to helpdesk@sharkspeed.com together with a copy / scanned document of this form.

ATTENTION! : YOUR CLUB LOGO WILL BE CHECKED BY AN ADMINISTRATOR TO DETERMINE IF ANY EXTRA CHARGES WILL APPLY DUE TO THE COMPLEXITY OF THE LOGO. YOU WILL BE NOTIFIED OF ANY EXTRA CHARGES BEFORE WE START THE PRODUCTION OF YOUR ORDERED ITEM.